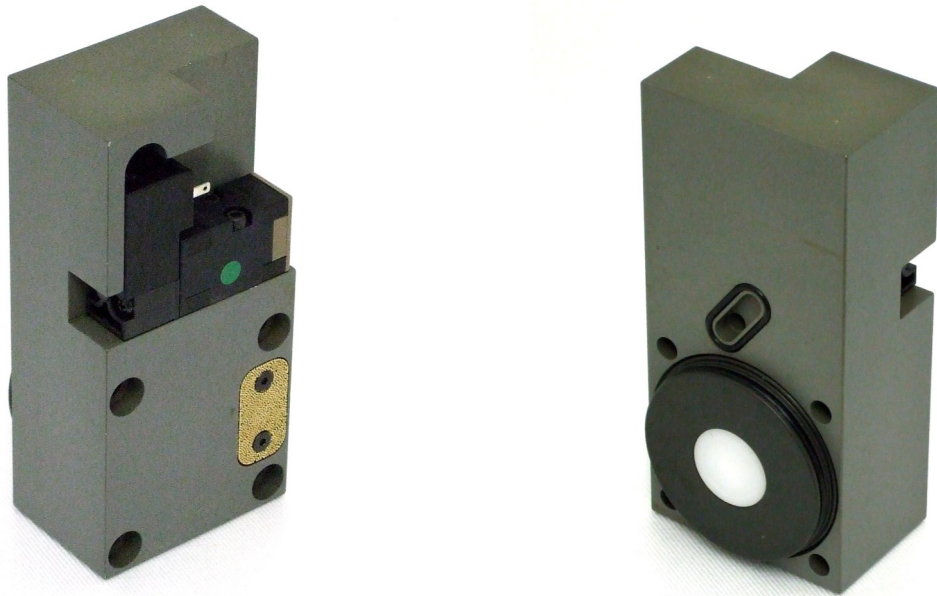


# *Product Bulletin*

**Product:** 29308002 Kronos® 2-Way Exhaust Valve EXH1/EXH2 S/D, N/C

**Description:** XL Engineering now offers direct fit replacement 2-way valves for Kronos® brand blow mold machines. This provides an economical solution by purchasing the individual valves when compared to the OEM offering the valve manifold assembly only. The entire valve body is hard coat anodized and is supplied with the high output 2 watt pilot valve. The piston and seals are interchangeable with the existing OEM valves.



**Offering:** Please contact us for pricing and availability. Also see 29168002 Pilot Valve and 0-901-08-725-9 / 29308005 Repair Kit.

6960 Hammond Avenue SE Dutton, MI 49316  
(t) 616.656.0324 (f) 616.656.0326 email: sales@xl-engineering.com

Sidel® & SBO® are the registered trademarks of Sidel. XLE is not a licensee of Sidel nor have XLE parts been approved or authorized by Sidel.