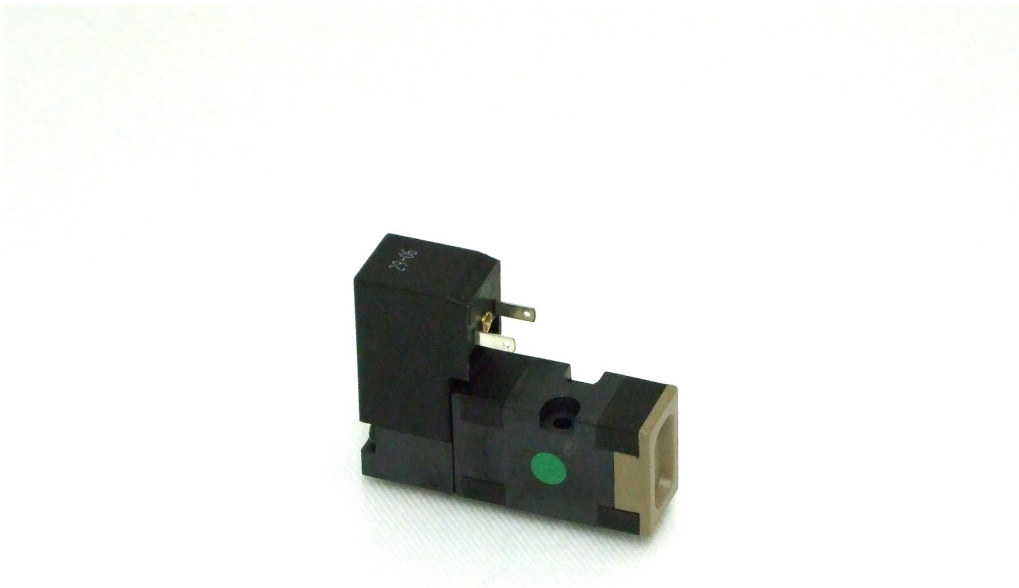


Product Bulletin

Product: 29168002 Krones® Pilot Valve Exhaust N/C Green Label, GEN 2

Description: XL Engineering offers the pilot valve only for the 2-way exhaust valves on the Krones® blow molding machines. The valve is interchangeable with the OEM pilot valve. This provides an economical solution as the OEM currently does not offer this valve separately.



Offering: Please contact us for pricing and availability.

6960 Hammond Avenue SE Dutton, MI 49316
(t) 616.656.0324 (f) 616.656.0326 email: sales@xl-engineering.com

Sidel® & SBO® are the registered trademarks of Sidel. XLE is not a licensee of Sidel nor have XLE parts been approved or authorized by Sidel.