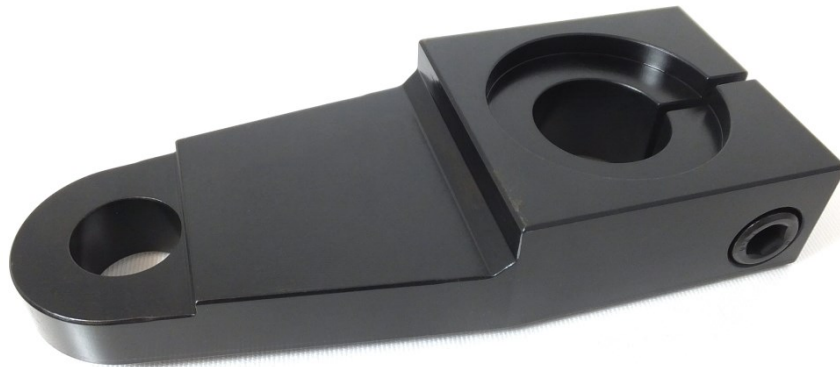


Product Bulletin

Product: 10326404 Lever - Screw Clamp Upgrade SBO®-24/26

Description: This upgrade replaces the OEM Lever and Locking Collar with a simple, single screw clamping feature. This design is intended to reduce downtime when a lever becomes out of sync. The OEM bearing pin and hardware for the roller bearings are reused.



Offering: Also see 10328077 Lever - Screw Clamp Assembly Upgrade.

6960 Hammond Avenue SE Dutton, MI 49316
(t) 616.656.0324 (f) 616.656.0326 email: sales@xl-engineering.com

Sidel® & SBO® are the registered trademarks of Sidel. XLE is not a licensee of Sidel nor have XLE parts been approved or authorized by Sidel.